

East Midlands

Initial proposals summary

Who we are and what we do

The Boundary Commission for England is an independent and impartial non-departmental public body which is responsible for reviewing Parliamentary constituency boundaries in England.

2013 Review

We have the task of periodically reviewing the boundaries of all the Parliamentary constituencies in England. We are currently conducting a review on the basis of new rules laid down by Parliament. These rules involve a significant reduction in the number of constituencies in England (from 533 to 502), and require that every constituency – apart from two specified exceptions – must have an electorate that is no smaller than 72,810 and no larger than 80,473 (please refer to *A guide to the 2013 Review* for details of how this has been calculated).

Initial proposals

We have now completed the first stage of the review process and have published our initial proposals for the new Parliamentary constituency boundaries in England. Information about the proposed constituencies is now available on our website or in hard copy at a local ‘place of deposit’ near you.

What is changing in the East Midlands?

The East Midlands region has been allocated 44 constituencies – a reduction of two from the current arrangement.

Our proposals leave ten of the 46 existing constituencies unchanged.

As it has not always been possible to allocate whole numbers of constituencies to individual counties, we have grouped some local authority areas into sub-regions. The number

of constituencies allocated to each sub-region is determined by the electorate of the combined local authorities.

Sub-region	Existing allocation	Proposed allocation
Lincolnshire	7	7
Derbyshire	11	10
Northamptonshire, Leicestershire, and Nottinghamshire	28	27

In Lincolnshire, three of the seven existing constituencies are unchanged while two are changed only by the exchange of wards between the two.

In Northamptonshire, Leicestershire, and Nottinghamshire, seven of the 28 existing constituencies are unchanged, five of which are located in Leicestershire.

Substantial change is required, however, elsewhere in the region to comply with the new rules.

In Derbyshire none of the existing constituencies is unchanged, though many of our proposals reflect existing constituencies.

In Northamptonshire, Leicestershire, and Nottinghamshire, it has been necessary to propose two constituencies that cross county boundaries. We have proposed one constituency that contains electors from both Northamptonshire and Leicestershire, which combines the towns of Daventry and Lutterworth, and another that contains electors from both Leicestershire and Nottinghamshire, combining the towns of Coalville and Keyworth.

How to have your say

We are consulting on our initial proposals for a 12-week period, from 13 September 2011 to 5 December 2011. We encourage everyone to use this opportunity to contribute to the design of the new constituencies - the more public views we hear, the more informed our decisions will be when analysing all the views we receive.

We ask everyone wishing to contribute to the design of the new constituencies to first read the *Initial proposals* report and accompanying maps before responding to us.

In particular, we would like to know:

- if you agree in full, in part or not at all with our initial proposals for the East Midlands region;
- which sub-regions you agree with and why;
- which sub-regions you disagree with and why; and
- if you can propose alternatives for areas you disagree with that meet the statutory rules we set out in our report.

You can find more details of how to respond on our website, or you can write to us direct or email eastmidlands@bcommengland.x.gsi.gov.uk. You can also find details of where and when we will be holding public hearings in your area on our website.

Boundary Commission for England
35 Great Smith Street
London
SW1P 3BQ

Tel: 020 7276 1102

Email: information@bcommengland.x.gsi.gov.uk

Website: www.consultation.boundarycommissionforengland.independent.gov.uk

© Crown copyright 2011

407194/0911

Find out more

You can find out more about the Boundary Commission for England and the 2013 Review by:

- visiting our website (search online for 'boundary changes' or go to www.consultation.boundarycommissionforengland.independent.gov.uk); and
- reading *A guide to the 2013 Review* (available on our website).

If you have any questions, you can:

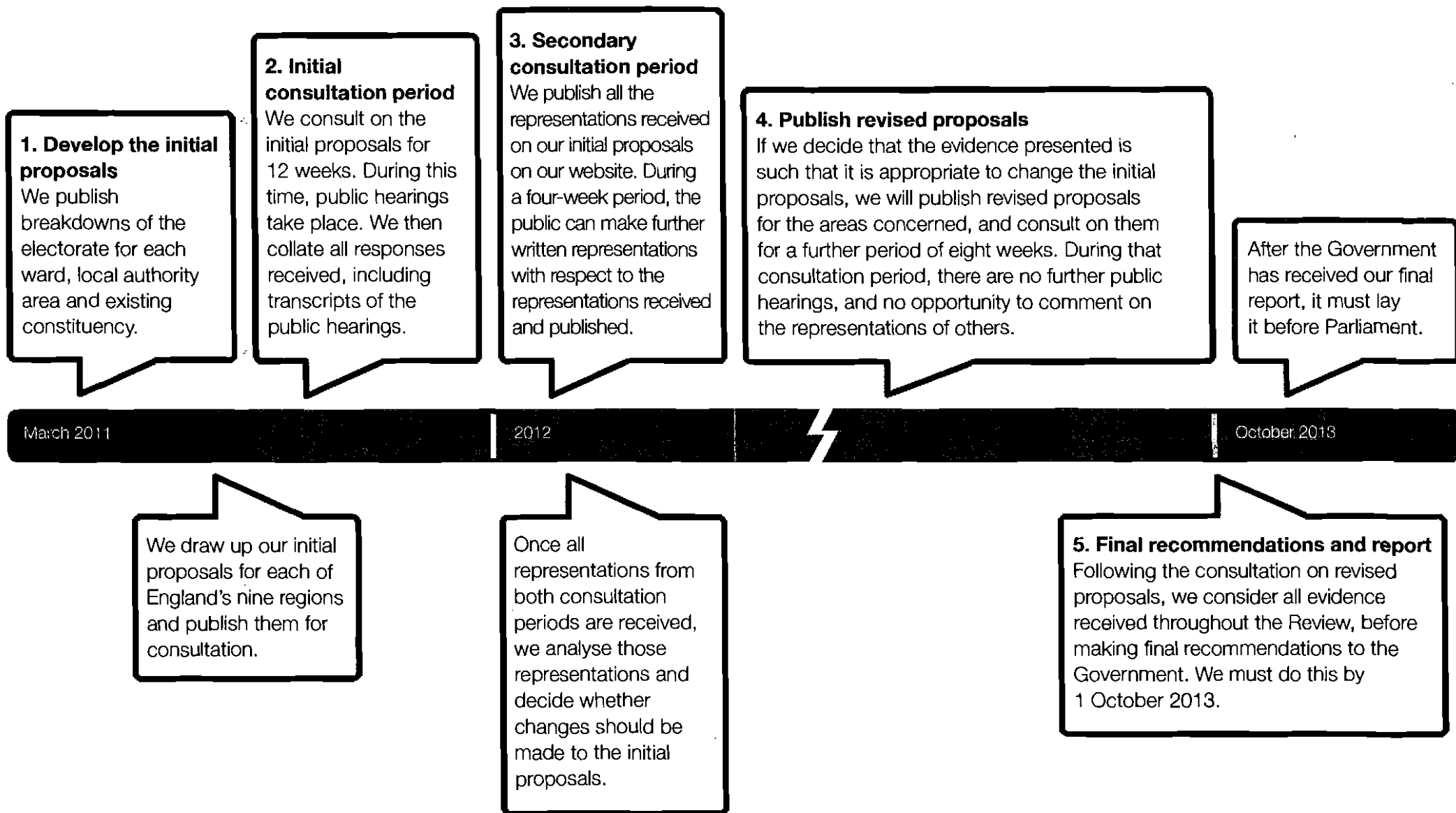
- email information@bcommengland.x.gsi.gov.uk;
- call 020 7276 1102; or
- write to The Boundary Commission for England, 35 Great Smith Street, London SW1P 3BQ.

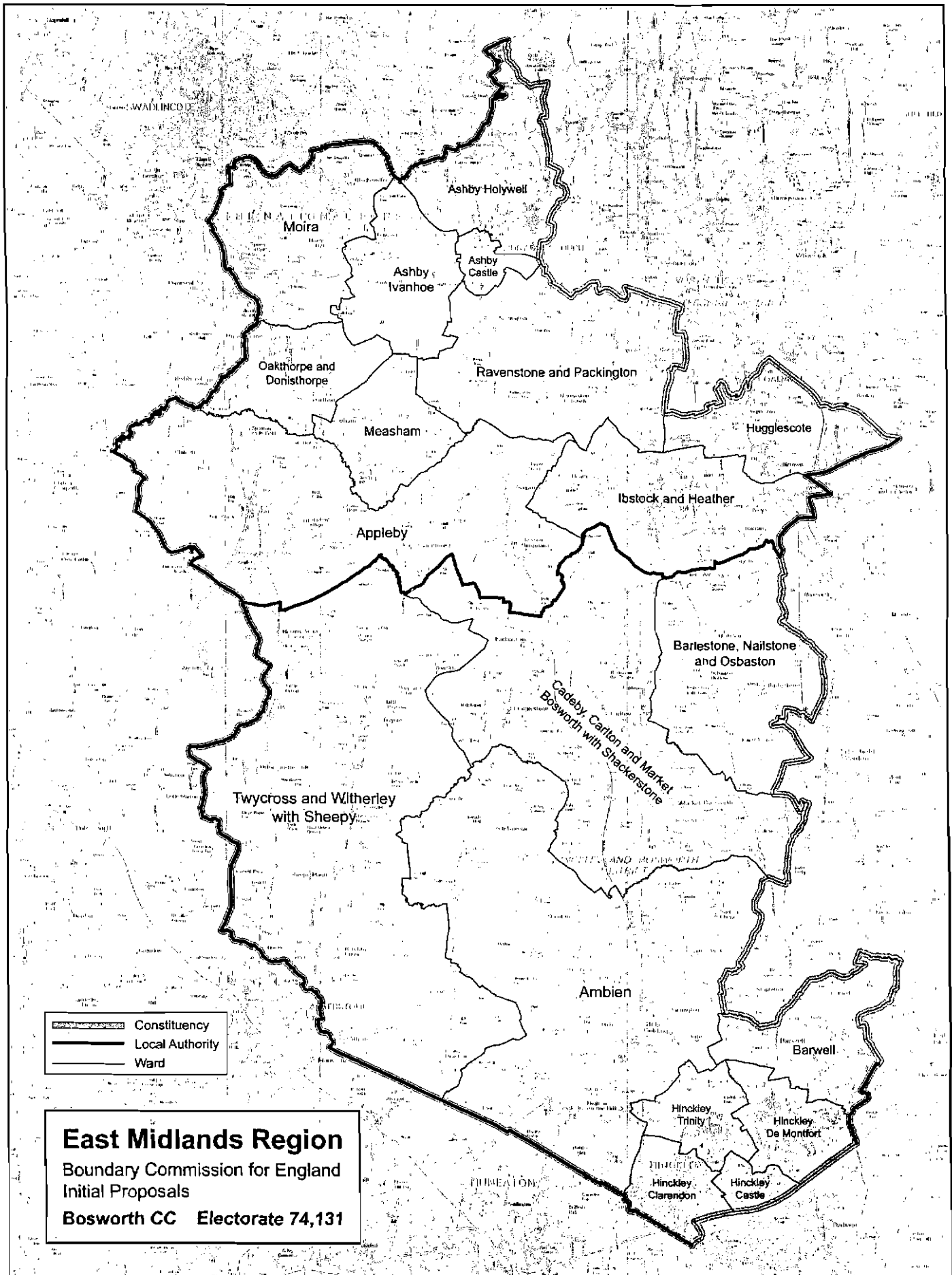
The 2013 Review of Parliamentary constituencies explained

The Boundary Commission for England is the independent public body that reviews all Parliamentary constituency boundaries in England every five years.

We are currently carrying out a review under new rules laid down by Parliament. This Review, which concludes in 2013, means substantial changes to Parliamentary constituencies in England: reducing the total number of constituencies from 533 to 502 and making sure that each constituency has similar numbers of registered electors. In many cases this means redrawing the existing boundaries.

Timeline for the 2013 Review



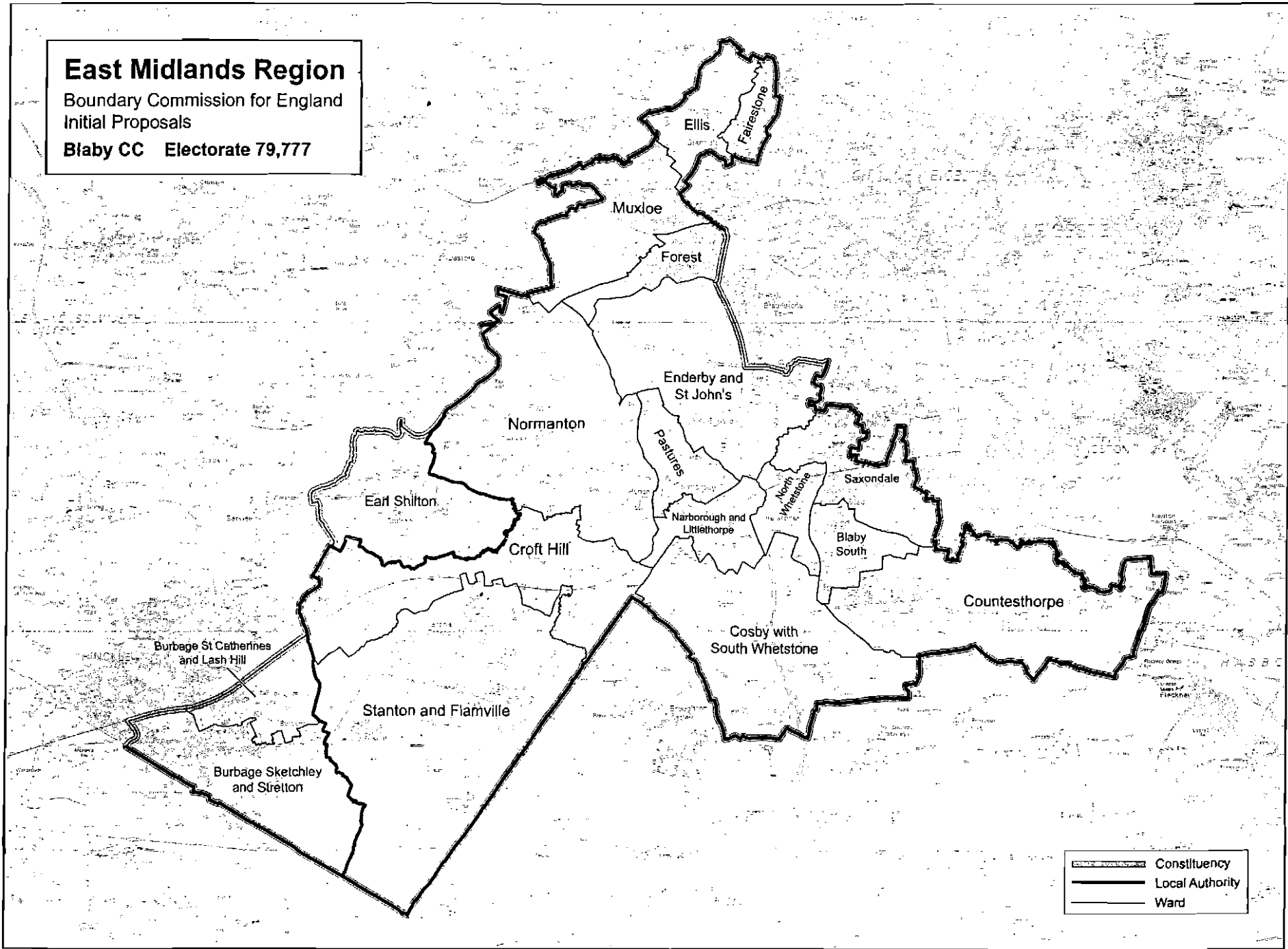


The mapping extract has been produced from Ordnance Survey's mapping data on behalf of the Boundary Commission for England © Crown copyright 2011.

East Midlands Region

Boundary Commission for England
Initial Proposals

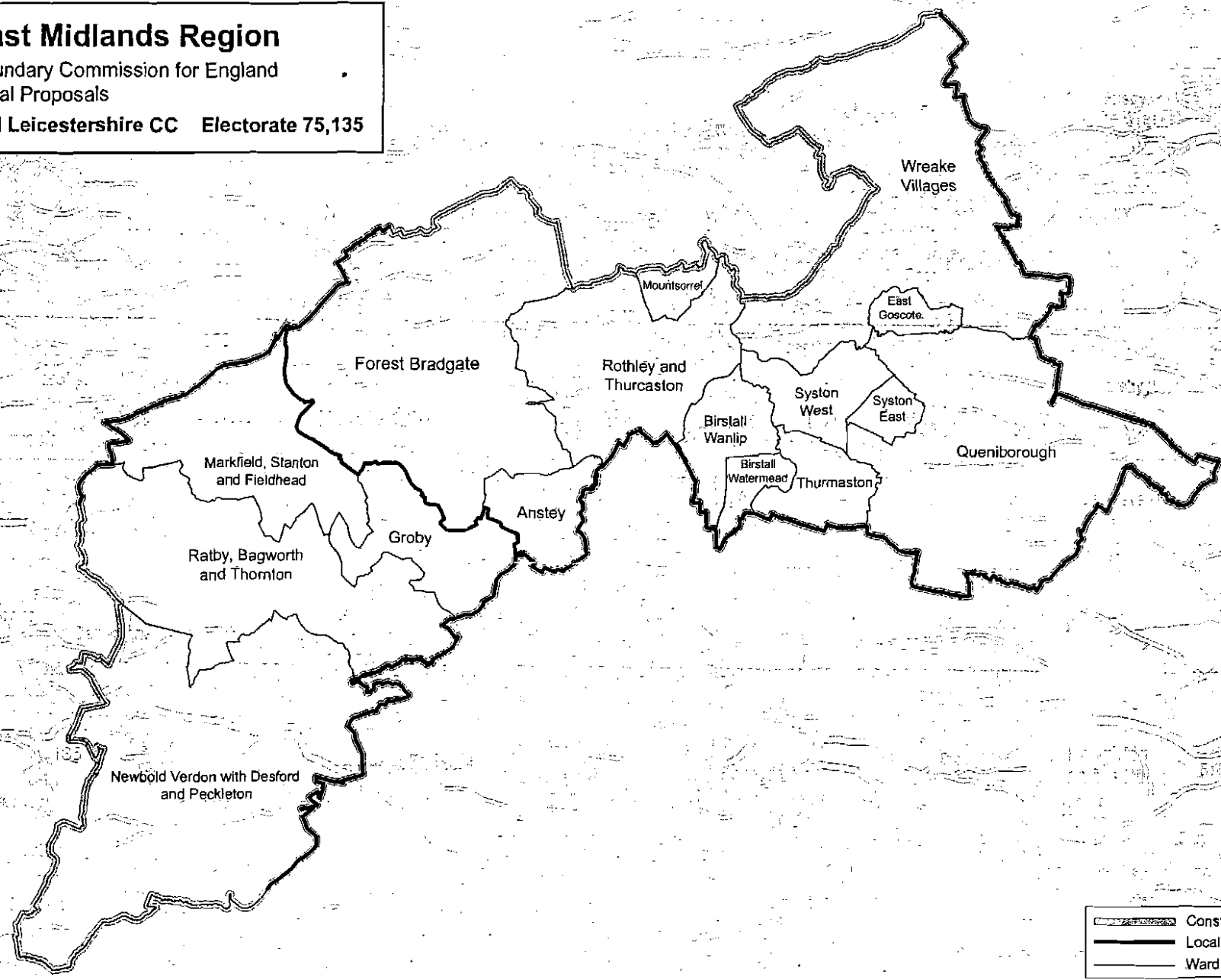
Blaby CC Electorate 79,777



	Constituency
	Local Authority
	Ward

This mapping extract has been produced from Ordnance Survey's mapping data on behalf of the Boundary Commission for England © Crown copyright 2011.

East Midlands Region
 Boundary Commission for England
 Initial Proposals
Mid Leicestershire CC Electorate 75,135



This mapping extract has been produced from Ordnance Survey's mapping data on behalf of the Boundary Commission for England © Crown copyright 2011.